

NAVY BLUE

A Floating Community ■ Charlestown Marina



NAVY BLUE

Boston's **first** floating community

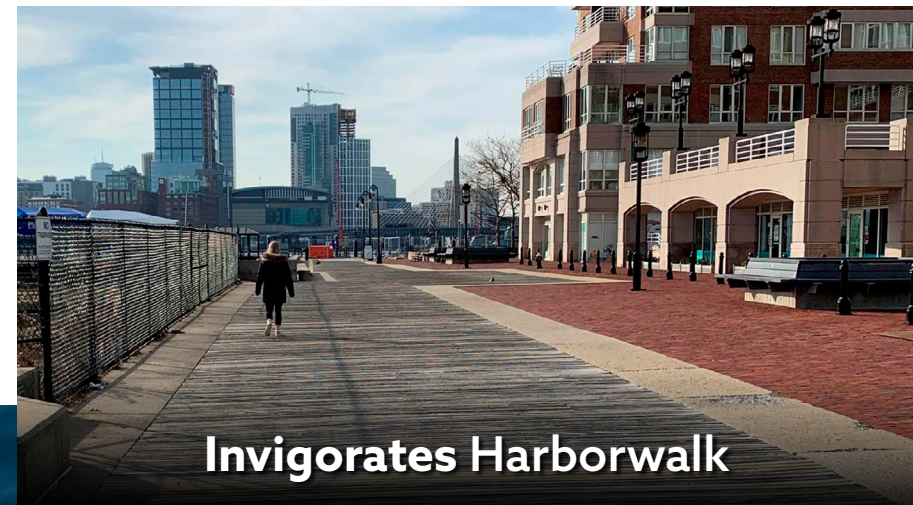
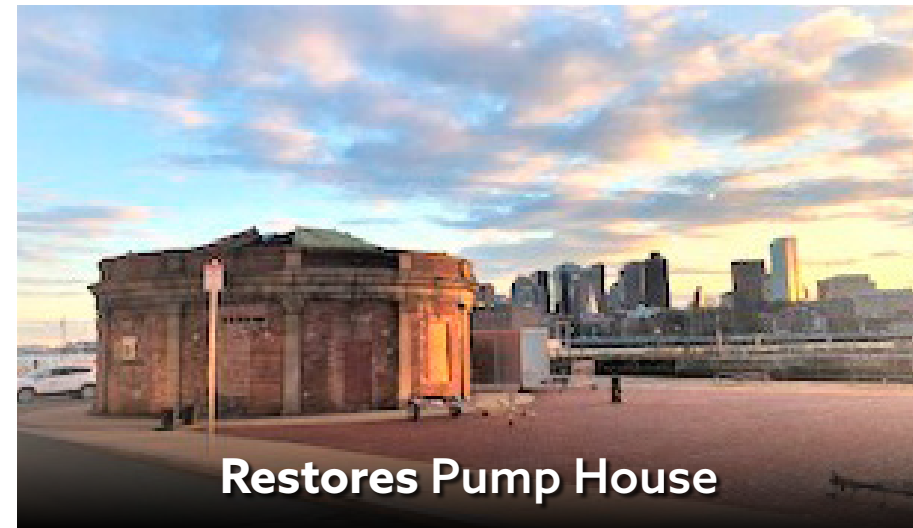
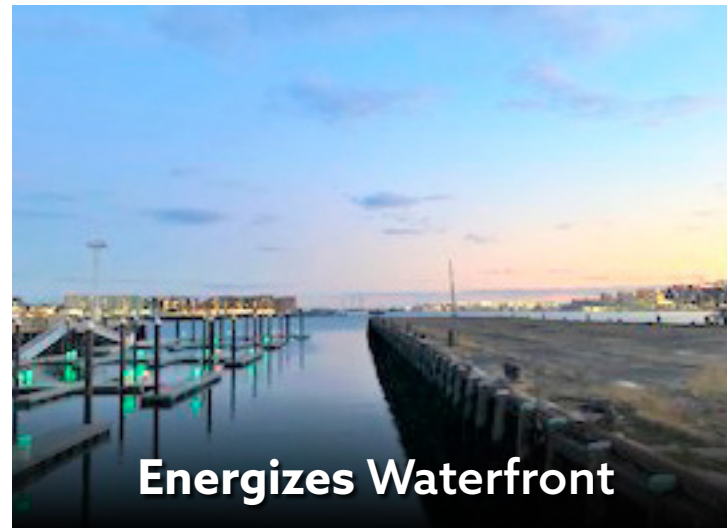
A **unique** marina experience

NAVY BLUE : Tri-Venture Partnership

- **Charlestown Marina:** Marina Expertise; Track Record in CNY
- **Parent + Diamond:** D&I Platform
- **Urban Spaces:** Innovative Sustainable Community Building



NAVY BLUE: **Dynamic** ■ **Effective** ■ **Feasible**



NAVY BLUE: Diversity & Inclusion

Temporary Jobs Created **765**
 Permanent Jobs Created **189**

OWNERSHIP

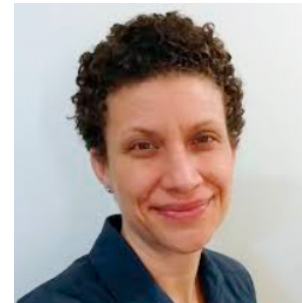


Parent + Diamond

PRE-DEVELOPMENT



McKenzie & Associates, PC
 Legal & Government Relations



Ripcord
 Engineering Inc.
 MEP Engineering



Samiotes
 Consulting, Inc.
 Civil Engineering



RSE Associates Inc.
 Structural Engineering



Fraser Engineering
 Services
 Surveying



Doerr Associates, Inc.
 Marketing

	On-Site	Off-Site	Total
Temporary	265	500*	765
Permanent	14	175**	189
	279	675	954

*Based on EB-5 Jobs Creation: Best practices for calculating construction jobs.

**Anticipated jobs from new floating community industry created at East Boston Ship Yard.

CONSTRUCTION



Mass Construction &
 Management, Inc.
 Land Based Construction



One Way Development, Inc.
 Marine Based Construction



Blue Atlantic
 Fabricators, LLC
 Live-Aboard Vessel
 Platform Construction

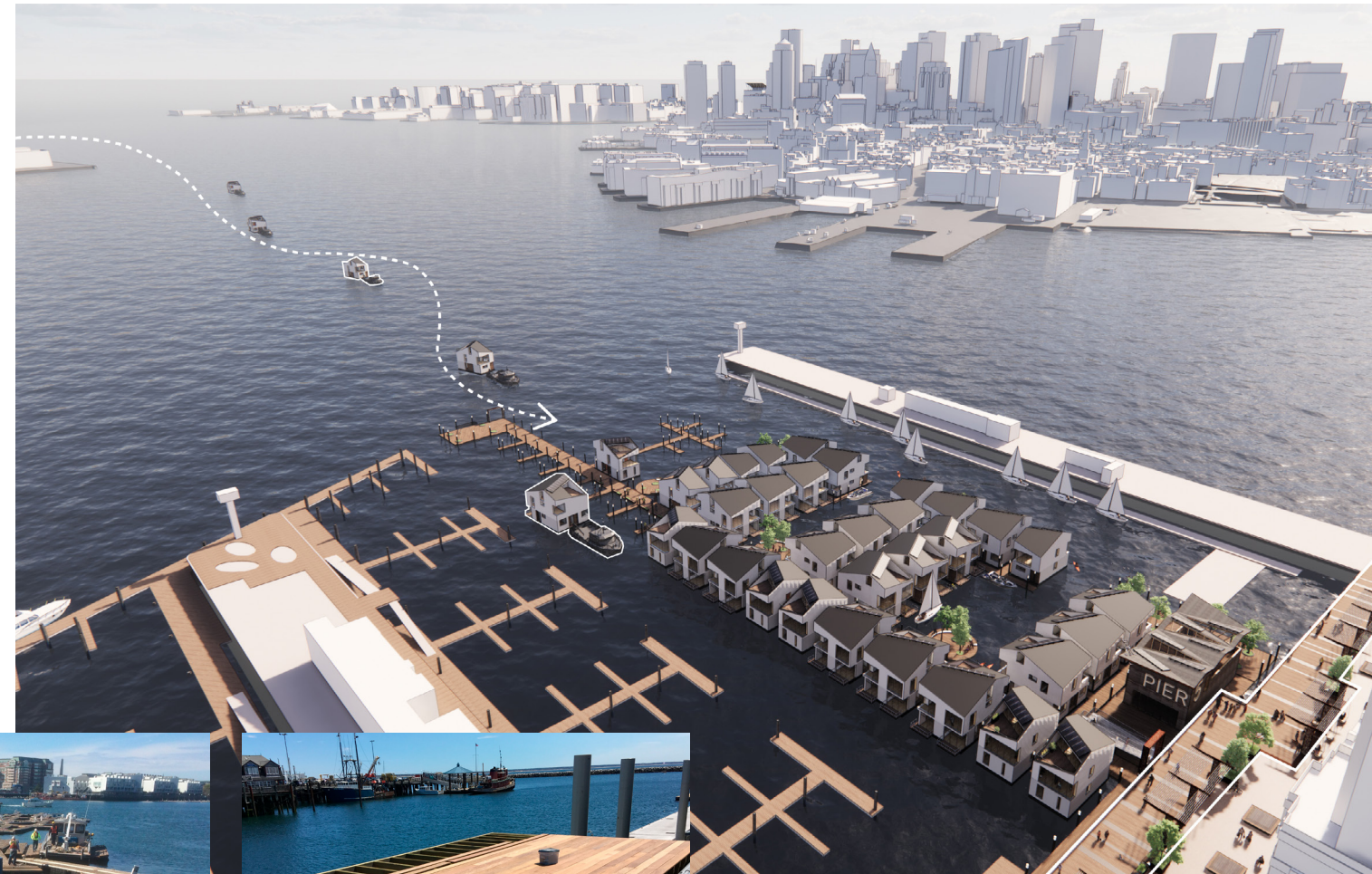
ONGOING OPERATIONS



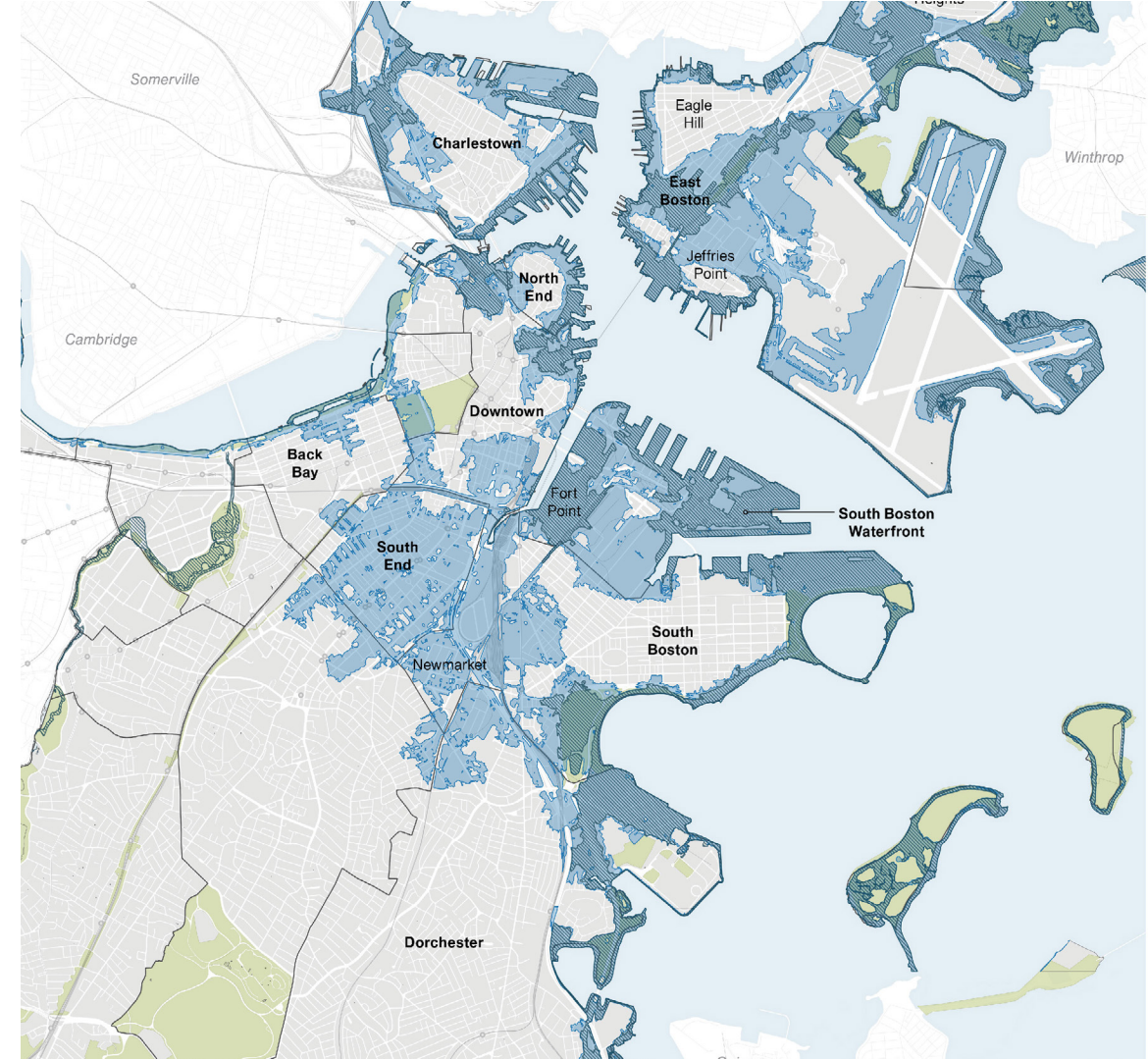
Main Street Hospitality
 Hospitality Management

NAVY BLUE: Concept Evolution

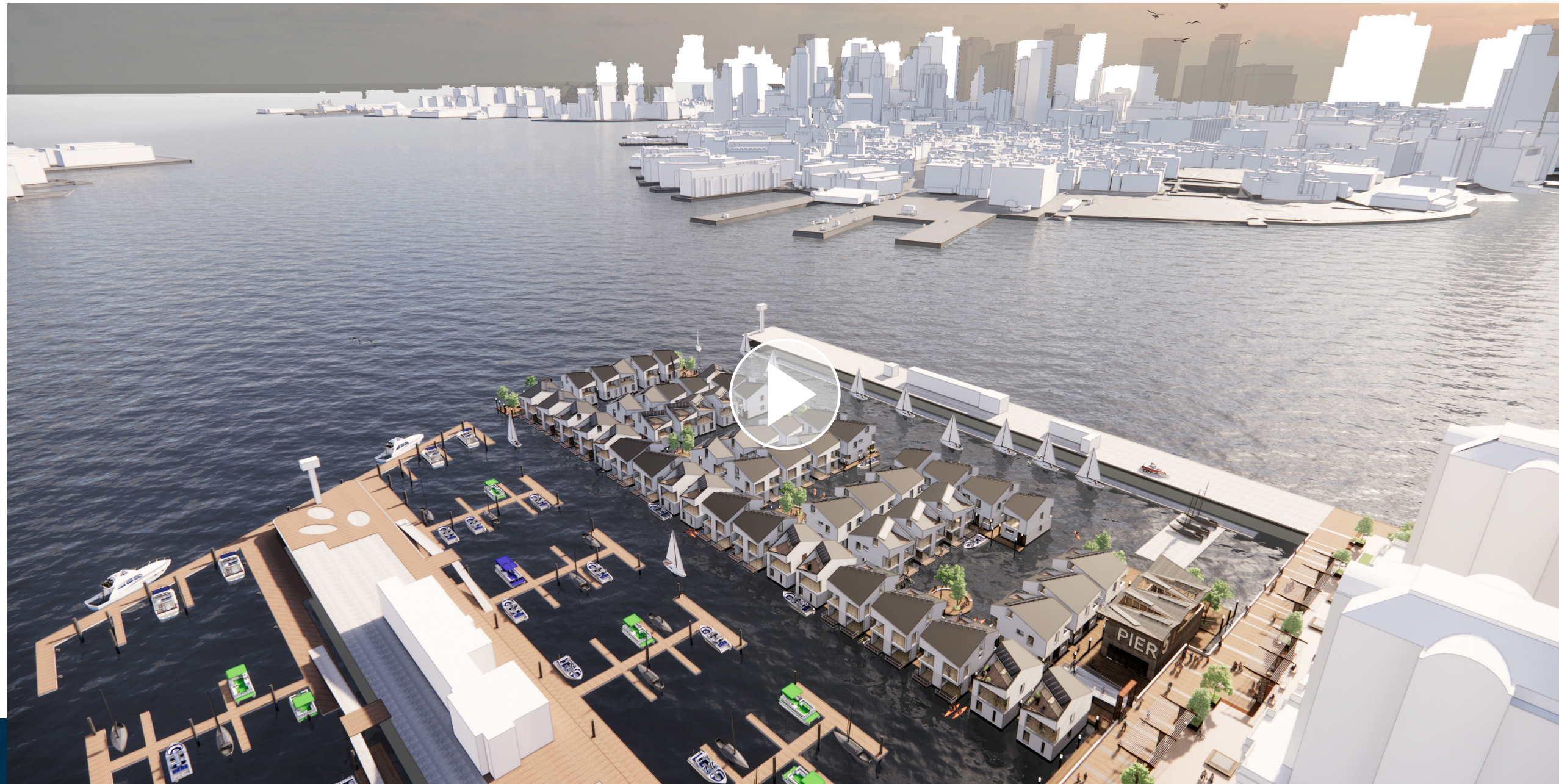
- Research
- Feasibility
- Environmental
- Footprint
- Aquatecture



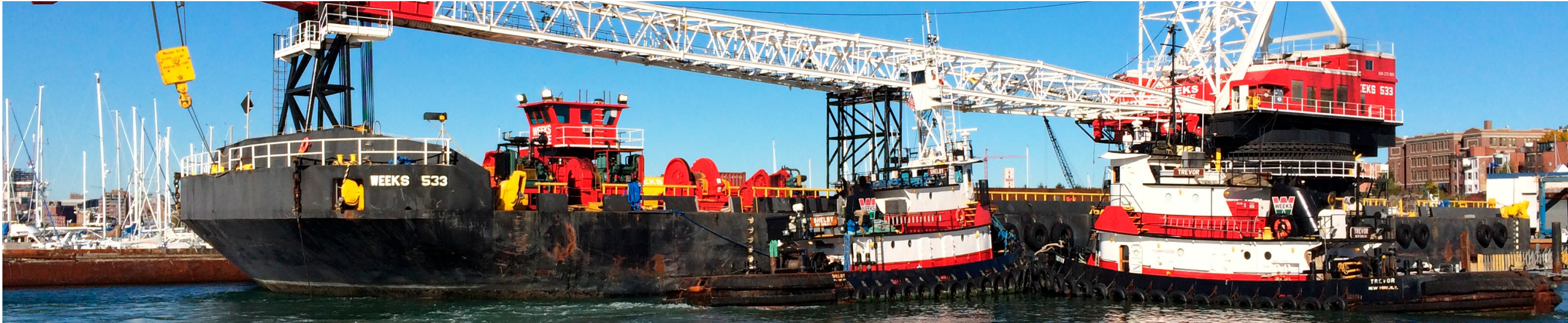
NAVY BLUE: Design Team Experience



NAVY BLUE: a Tour



NAVY BLUE: Construction



NAVY BLUE: Community Benefits



- Housing Trust
- Micro Investments
- CHS Curriculum
- Spaulding LV
- Public Promenade
- Harborwalk
- Pump House
- Water Taxi

An aerial, top-down view of a modern floating community. The scene is dominated by a deep blue body of water. On the left, a long wooden pier extends into the water, with several white sailboats moored alongside it. In the center and right, a cluster of modern, multi-story houses with light-colored facades and large windows is built on floating platforms. The houses are arranged in a grid-like pattern, with narrow walkways between them. A prominent feature is a large, circular green space with a tree in the center, surrounded by a low wall. Other smaller trees and greenery are scattered throughout the community. In the bottom right, another pier is visible with several smaller white boats moored. The overall atmosphere is serene and modern.

THANK YOU

NAVY BLUE

A Floating Community ■ Charlestown Marina